

N 10180641.7760  
E 3191675.0984  
LAT: 30°33'53.75207  
LONG: 97°29'20.12814"

N 10181286.6030  
E 3193303.8212  
LAT: 30°33'59.72030"  
LONG: 97°29'01.31472"

N 10181725.5380  
E 3194420.7550  
LAT: 30°34'03.78035"N  
LONG: 97°28'48.41358"W

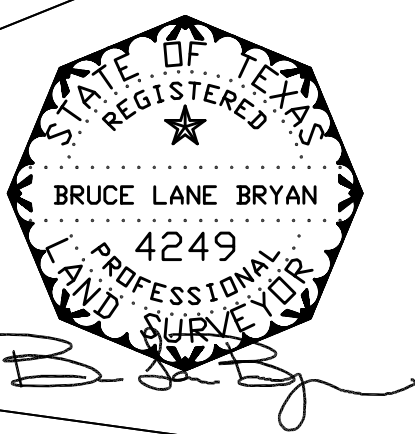
N 10181685.1930  
E 3194317.3110  
LAT: 30°34'03.40738"N  
LONG: 97°28'49.60833"W

2012  
2,177,295 Sq Ft  
49.984 Ac.

LINE	LENGTH	BEARING
L1	2313.98	S22°18'22"E
L2	356.08	N67°39'28"E
L3	193.71	S22°20'32"E
L4	356.08	S67°39'28"W
L5	1029.96	S21°43'45"E
L6	326.28	S46°12'49"E
L7	330.43	S64°51'10"E
L8	103.93	S31°22'00"E
L9	184.98	N68°38'17"E
L10	169.50	S21°21'43"E
L11	387.24	N77°43'03"E
L12	356.79	N19°04'48"W
L13	156.21	N72°13'13"E
L14	371.91	S19°40'39"E
L15	984.30	N77°47'36"E
L16	243.43	S22°23'26"E
L17	2188.75	S77°20'04"W
L18	894.02	N23°20'28"W
L19	3606.43	N21°49'46"W
L20	90.56	N68°26'20"E

2012  
1,296,825 Sq Ft  
29.771 Ac.

SAVE & EXCEPT  
2.91 ACRES (PER TAX MAP)



Z:\AUTOCAD\PROJECT DRAWINGS\09-055G.dwg 5/29/2012 8:11:13 AM CDT

**SURVEYORS CERTIFICATE**  
THIS PRODUCT IS A GRAPHIC REPRESENTATION OF THE DATA SHOWN HEREON. IT DOES NOT REPRESENT AN ON-THE-GROUND SURVEY; IS NOT A SURVEY PRODUCT AND ONLY REPRESENTS THE APPROXIMATE RELATIVE LOCATIONS OF PROPERTY BOUNDARIES AND/OR NATURAL AND MAN-MADE FEATURES. THIS PRODUCT DOES NOT CONFORM TO A CLASS A, GIS/LIS SURVEY PRODUCTS DEFINED IN CATEGORY 10 OF THE TSPS MANUAL OF PRACTICE AND SHALL NOT BE RELIED UPON FOR USES WHICH COULD AFFECT THE HEALTH, SAFETY OR WELFARE OF THE GENERAL PUBLIC.  
DATE: MAY 24, 2012

**CITY OF TAYLOR  
PROPOSED ANNEXATION  
2012**

**BRYAN TECHNICAL SERVICES, INC.**  
P. O. BOX 1371  
TAYLOR, TEXAS 76574  
512-352-9090  
512-352-9091 (Fax)  
surveying@austin.rr.com

DRAWN BY: BLB	CHECKED BY: BLB
SCALE: 1"=500'	
DATE: 5-24-2012	
JOB NUMBER	SHEET
12-236	